

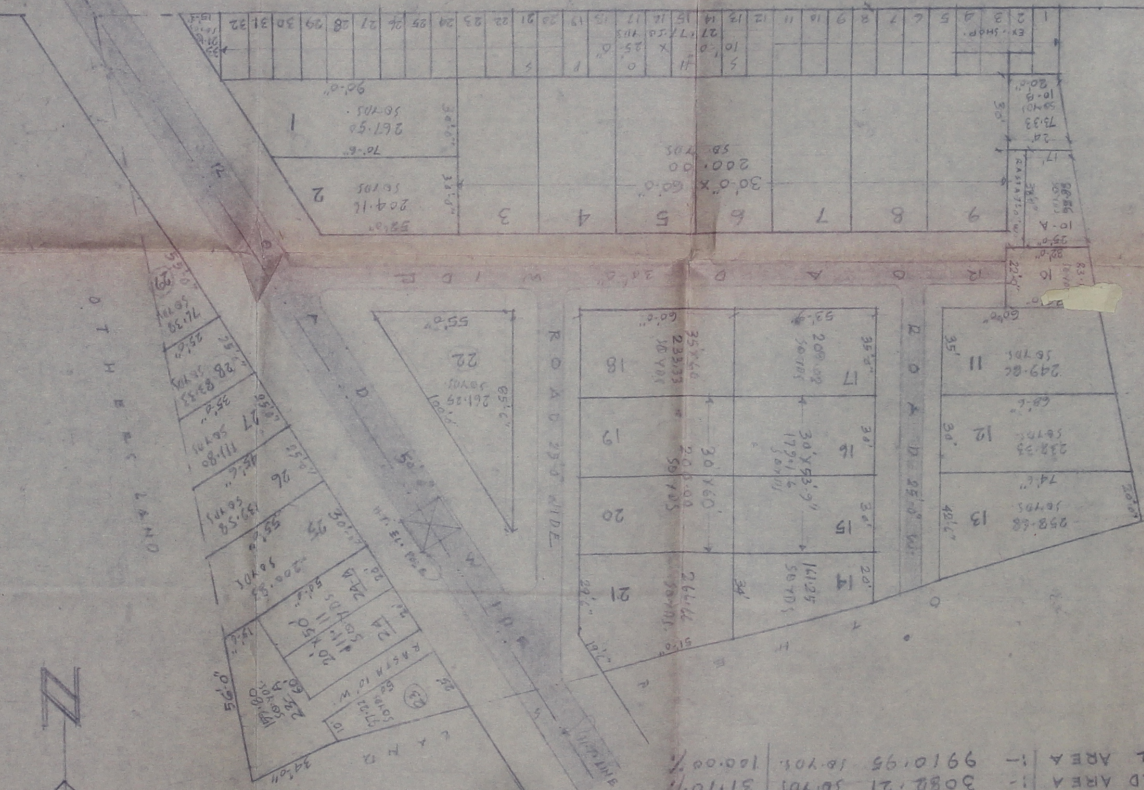
# LAY OUT PLAN OF ALANKAR COLONY

ON NIWARU ROAD UNDER BHARAV GRAH  
NIRMAN SAHAKARI SAMITI LTD. JALPUR (REG. NO. 3122/L)

(SCALE 1" = 100' = 30 FEET)

LAND USE ANALYSIS:-

1. PLOT AREA :-	5918.92	58.4%	59.72%
2. SHOP AREA :-	0909.82	58.4%	9.18%
3. ROAD AREA :-	3082.21	58.4%	31.10%
4. TOTAL AREA :-	9910.95	58.4%	100.00%



1	EX-SHOP	78.33	24
2		58.40	10-B
3		58.40	10-A
4		58.40	10
5		58.40	17
6		58.40	18
7		58.40	19
8		58.40	20
9		58.40	21
10		58.40	22
11		58.40	23
12		58.40	24
13		58.40	25
14		58.40	26
15		58.40	27
16		58.40	28
17		58.40	29
18		58.40	30
19		58.40	31
20		58.40	32

SECRETARY  
BHARAV GRAH NIRMAN SAHAKARI SAMITI LTD. JALPUR  
PRESIDENT

प्रा. नि. सा. समि. ज.प.

TO NIWARU ROAD 140.0' WIDE

# GANESH - VIHAR

LAY OUT PLAN OF GANESH-VIHAR  
 UNDER BHAIRAV GRAH NIRMAN SAHAKARI  
 SAMITI LTD. JAIPUR. (REG. NO. 3122-L)  
 (SCALE: 1"=32')

LAND USE:-  
 1. PLOT AREA: 6234.08 SQ. YDS 52.97%  
 2. SHOP AREA: 1390.60 SQ. YDS 22.14%  
 3. ROAD AREA: 4920.00 SQ. YDS 78.87%  
 4. TOTAL AREA: 11944.68 SQ. YDS 100.00%

