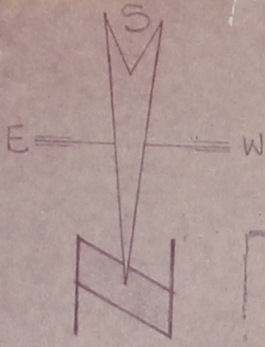
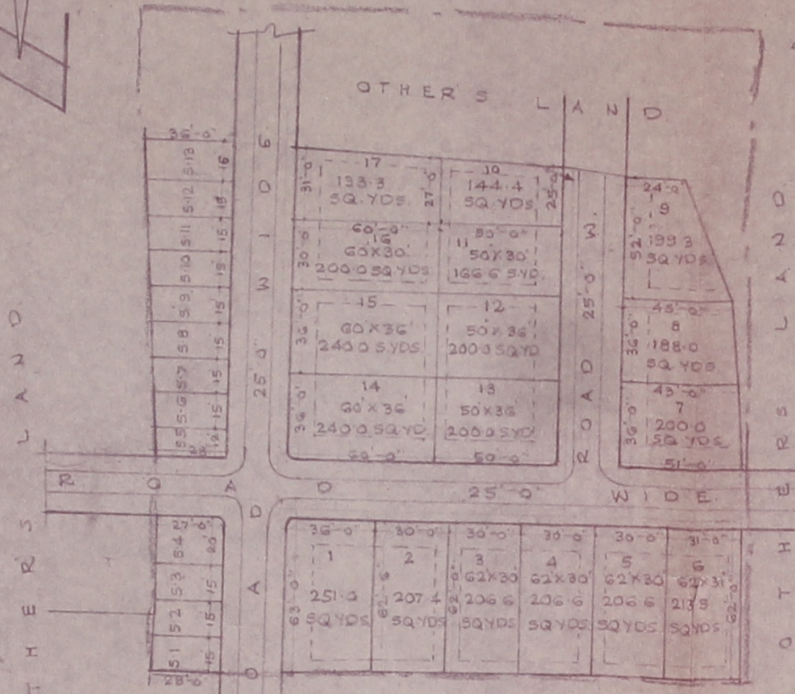


2



REFERENCES.

- 1. KHASRA NO. = 623
 - 2. PLOTS AREA = 3463.8 SQ.YDS
 - 3. SHOPS AREA = 671.5 "
 - 4. ROAD AREA = 1480.5 "
- TOTAL AREA = 5,615.8 SQ.YDS
OR 1 BIGHA 17 BISHWA



खसरा नं. 623

KHASRA PLAN
(SCALE:- 330 FT. = 1 INCH)

EXISTING OIL & DALL MILL.

EXISTING PLOTS

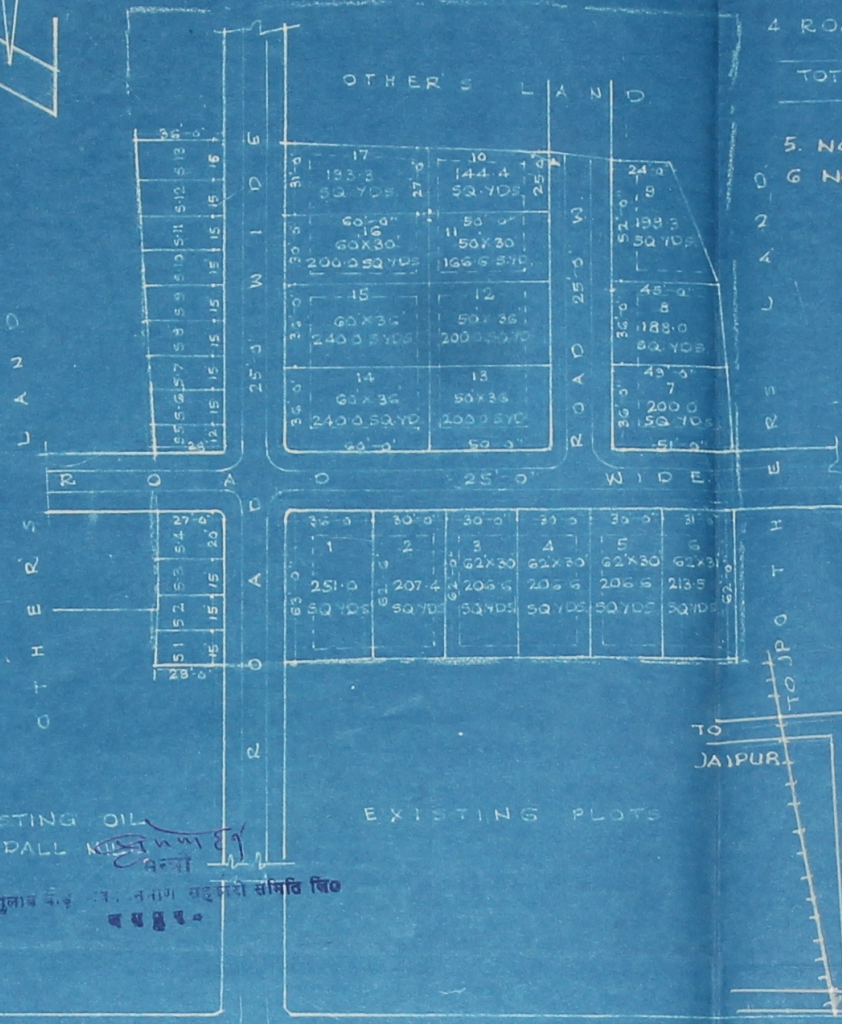
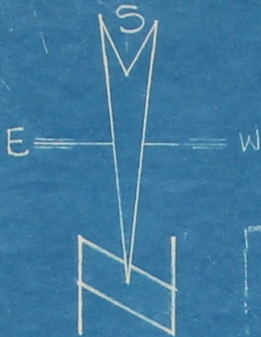
सन्वी
गुलाम बाई भवन निर्माण सहकारी समिति लि०
बयपुर-

(MADEENA COLONY)
LAYOUT PLAN OF A COLONY OF "GULAB BADI
BHAWAN NIRMAN SAHAKARI SAMITI LTD."
ON SHALIMAR FACTORY ROAD, JHOTWARA, JP.

SCALE 50 FEET = 1 INCH.

SECRETARY / PRESIDENT

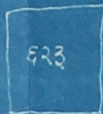
29



REFERENCES.

- 1 KHASRA NO = 623
- 2 PLOTS AREA = 3463.8 SQ.YDS
- 3 SHOPS AREA = 671.5 "
- 4 ROAD AREA = 1480.5 "
- TOTAL AREA = 5,615.8 SQ.YDS
- OR 1 BIGHA 17 BISSWA

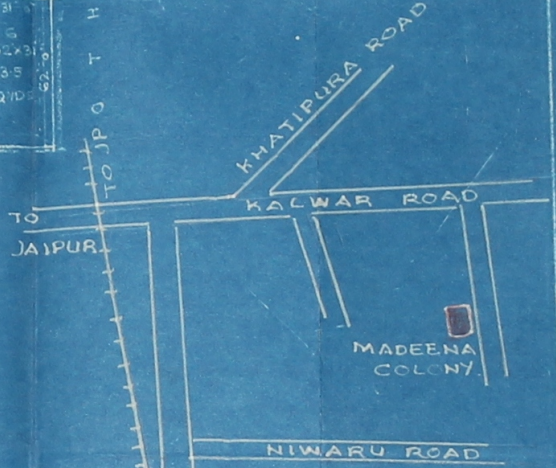
- 5. NO. OF PLOTS = 17
- 6 NO. OF SHOPS = 13



KHASRA PLAN
(SCALE:- 330 FT = 1 INCH)

EXISTING OIL & PALL
गुलाब बाड़ी भवन निर्माण सहकारी समिति लि०
बनारस

EXISTING PLOTS



KEY PLAN.
(NOT TO SCALE)

(MADEENA COLONY)
LAY-OUT PLAN OF A COLONY OF GULAB BADI
BHAWAN. NIRMAN SAHAKARI SAMITI LTD.
ON SHALIMAR FACTORY ROAD, JHOTWARA, JP.

SCALE 50 FEET = 1 INCH

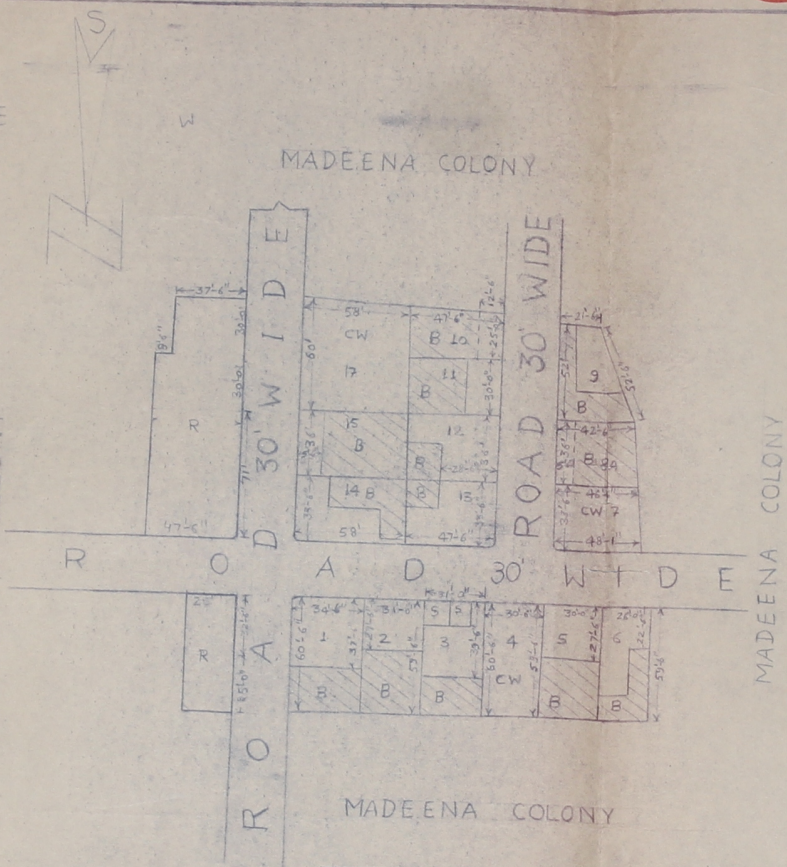
SECRETARY / PRESIDENT.

36

J D A

MADEENA COLONY

BISMILLAH COLONY



LOCATION PLAN

AS PER MADEENA COLONY/SKETCH PLAN
 नगर विकास योजना अन्तर्गत मु. प्र. ७७
 अन्तर्गत स्थित स्थिति :-
 १. पूर्वी/अभिमुख दिशि कुतवाड - B अन्तर्गत स्थिति
 २. उत्तरी दिशि कुतवाड - CW
 ३. पश्चिमी दिशि कुतवाड - Y
 मूल्यांकन :-
 क्षेत्र के अनुसंधानकर्ता की अन्तर्गत स्थिति :-

क्र.सं.	वि. संख्या	क्षेत्रफल	वृद्धि
1.	अन्तर्गत	3246.63	54.08
2.	अन्तर्गत		
3.	क्षेत्र	1872.66	31.55
4.	सुविधाएं	817.77	13.79
कुल		5937.06	100%

सर्वेक्षण की तारीख :- १७/०८/७७
 सर्वेक्षणकर्ता :- ७७/७७/७७/७७

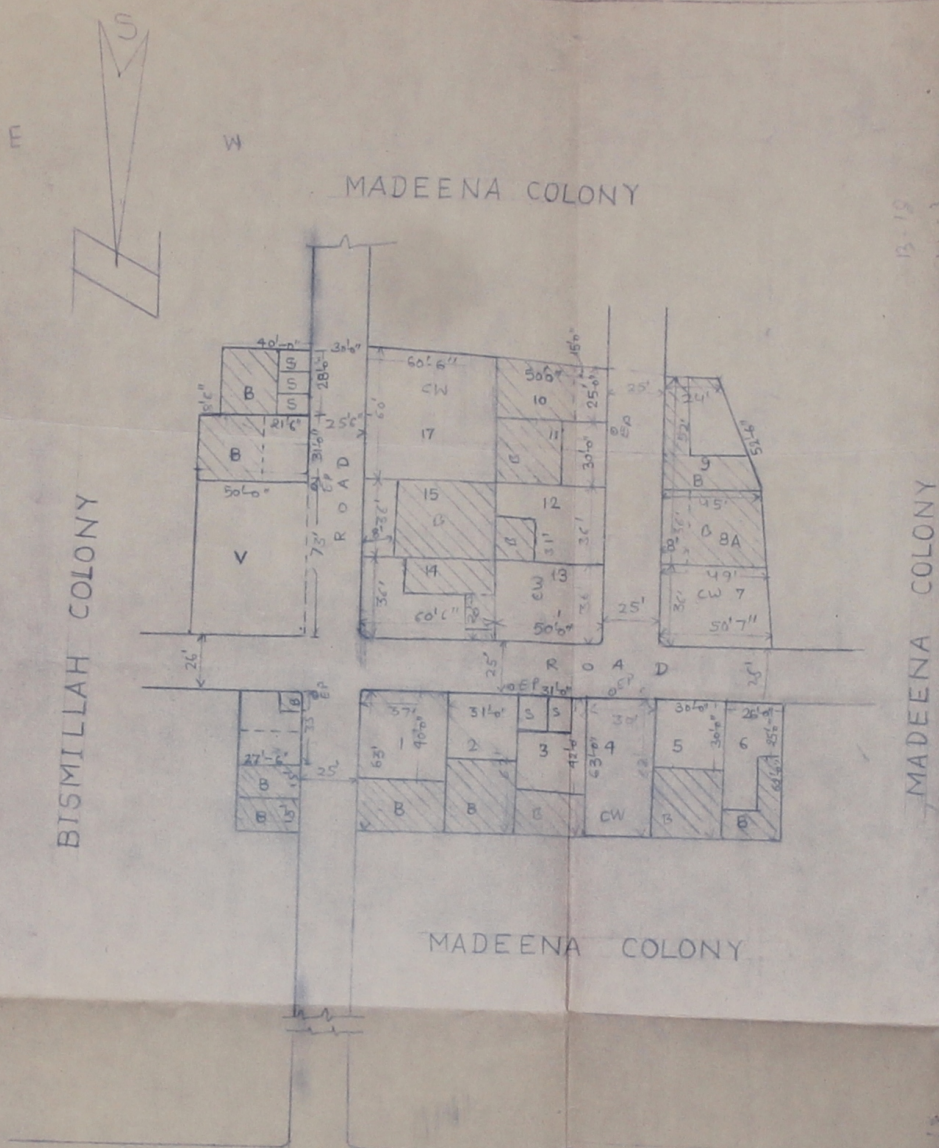
यह योजना/चित्रण/सुविधाएं
 जमीन/अनुसंधान/अनुसंधान
 क्षेत्र/क्षेत्र/क्षेत्र/क्षेत्र/क्षेत्र
 क्षेत्र/क्षेत्र/क्षेत्र/क्षेत्र/क्षेत्र
 क्षेत्र/क्षेत्र/क्षेत्र/क्षेत्र/क्षेत्र
 क्षेत्र/क्षेत्र/क्षेत्र/क्षेत्र/क्षेत्र
 क्षेत्र/क्षेत्र/क्षेत्र/क्षेत्र/क्षेत्र
 क्षेत्र/क्षेत्र/क्षेत्र/क्षेत्र/क्षेत्र
 क्षेत्र/क्षेत्र/क्षेत्र/क्षेत्र/क्षेत्र

NAME OF SOCIETY: ISLAMIC BUILDERS SOCIETY
 NAME OF SCHEME: MADEENA COLONY

ZONE NO. SECTION NO.
 SCALE: 1" = 50' ORK No

AS PER DICSESSION OF B.P.C

(Signature)
 A.P. Zone O.P. S.P.
 JAIPUR DEVELOPMENT AUTHORITY JAIPUR



B. 18
 V. 51
 Total 22
 60
 3442.72
 579.00
 141.5
 544.35

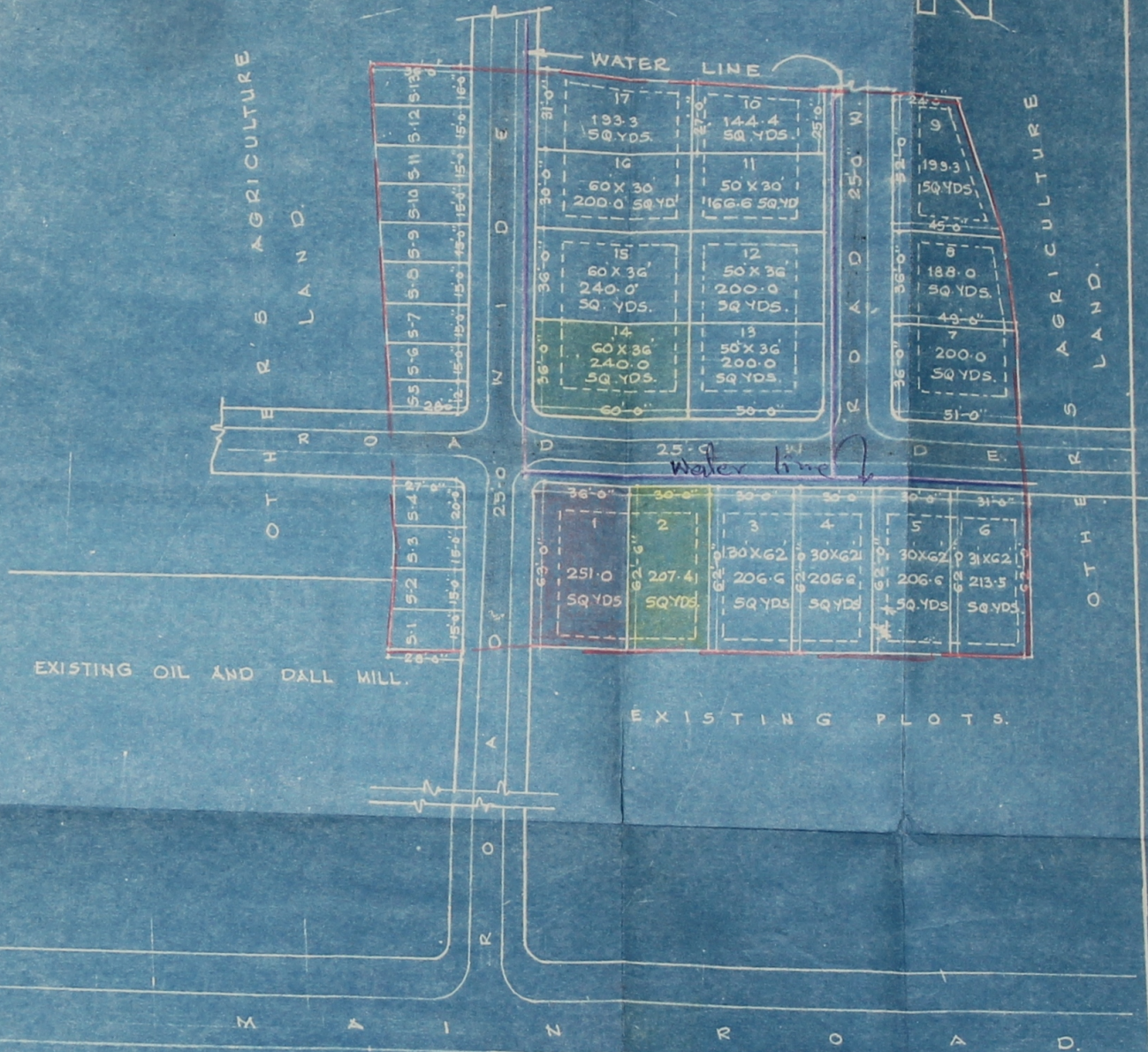
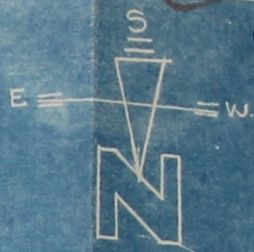
(MADEENA COLONY)

SCALE 50' = 1"

72.59% आवासीय	=	4350.05 SQ.Y
27.41% सडक	=	1641.85 "
TOTAL		5991.90

REFERENCE :-

1. KHASRA NO. = 623
2. TOTAL LAND AREA = 2 BIGHA.
- 3 ON KALWAL ROAD JHOTWARA.



LAY OUT PLAN OF A COLONY OF "GULAB BADI
 BHAWAN NIRMAN SAHAKARI SAMITI LTD."
 ON SHALIMAR FACTORY ROAD, JHOTWARA.

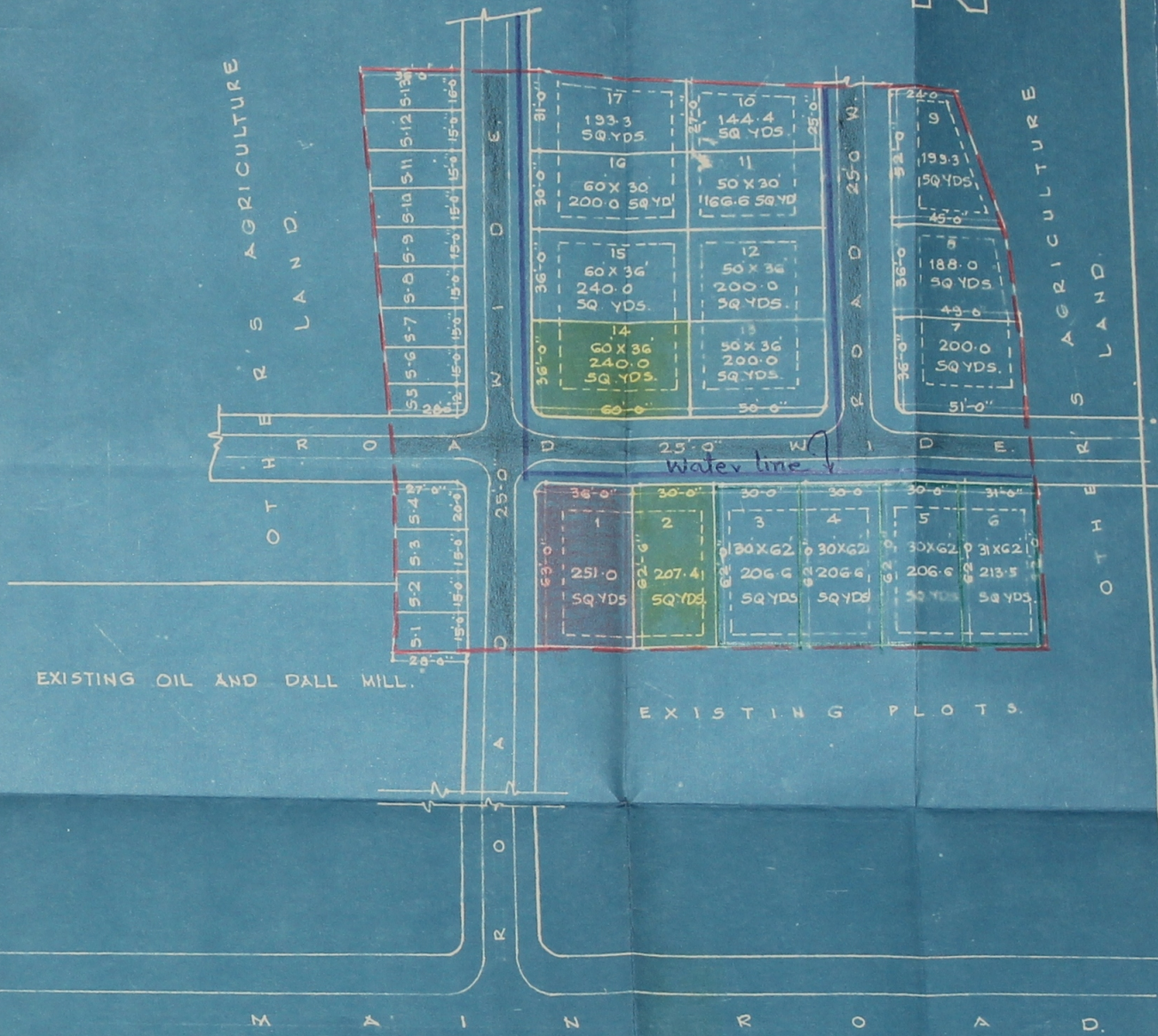
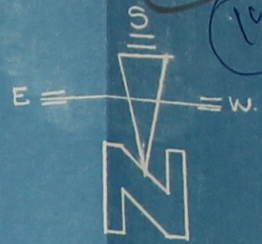
SCALE 40 FT = 1 INCH.

SECRETARY PRESIDENT.
 GLAB BADI BHAWAN NIRMAN SAHAKARI
 SAMITI LTD.

मंत्रि
 शाही सहाकारी समिति 1966

REFERENCE :-

1. KHASRA NO. = 623
2. TOTAL LAND AREA = 2 BIGHA.
- 3 ON KALWAL ROAD JHOTWARA.



LAY OUT PLAN OF A COLONY OF "GULAB BADI
 BHAWAN NIRMAN SAHAKARI SAMITI LTD.
 ON SHALIMAR FACTORY ROAD, JHOTWARA.

SCALE 40 FT = 1 INCH.

SECRETARY PRESIDENT.
 GLAB BADI BHAWAN NIRMAN SAHAKARI
 SAMITI LTD.