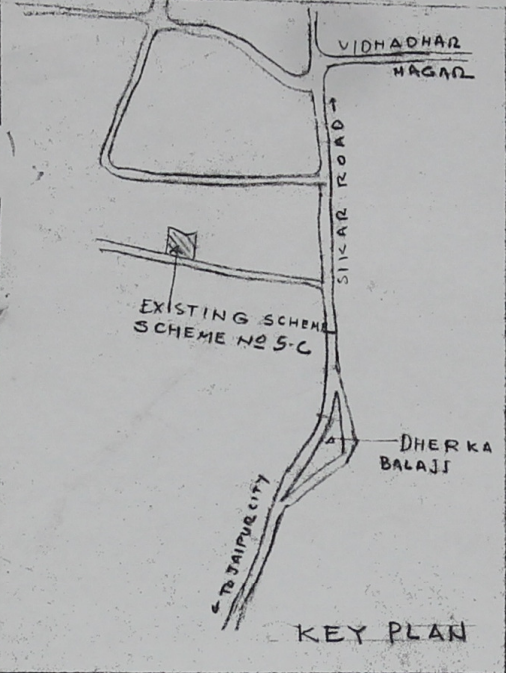
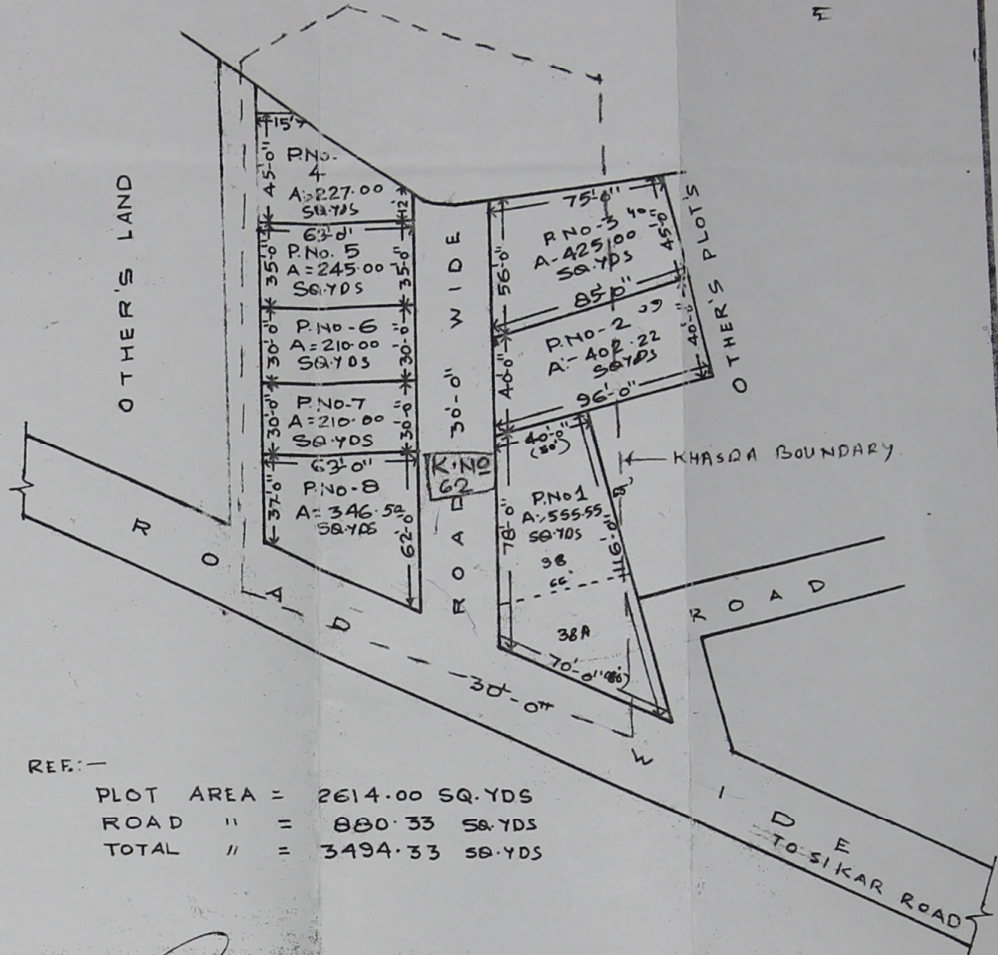


KHASRA MAP



KEY PLAN



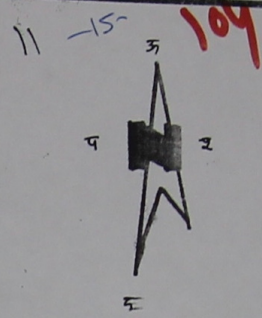
REF:-

PLOT AREA	=	2614.00 SQ.YDS
ROAD	"	= 880.33 SQ.YDS
TOTAL	"	= 3494.33 SQ.YDS

102
 लक्ष्मीजक
 म्युचुअल हाउसिंग को-ऑप. सो. लि.
 जयपुर

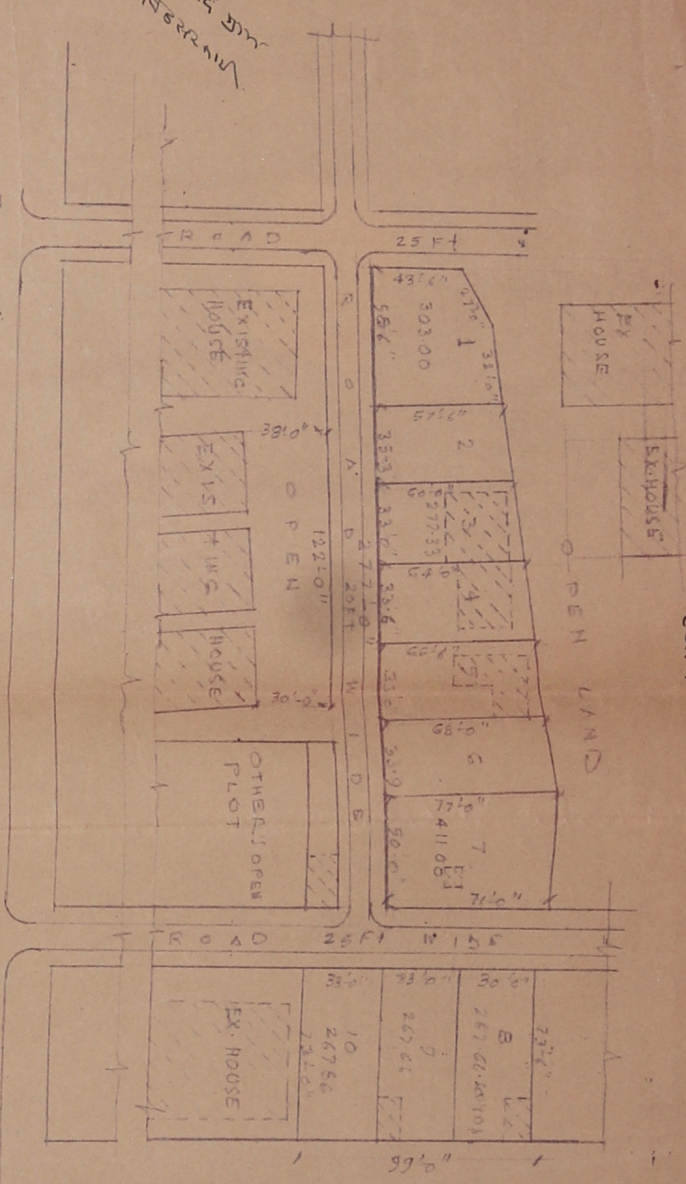
LAY OUT PLAN OF SCHEME No.5-C
 IN MUTUAL HOUSING CO-OPERATIVE SOCIETY LTD.
 DHER KA BALAJI CHOMU ROAD JAIPUR
 SCALE:- 1" INCH = 50' FEET

SECRETARY
 MUTUAL HOUSING CO-OP.
 SOCIETY LTD. JAIPUR



Map of Village of Bir Saklari

Scale



NOTE
VILLAGE - BIR SAKLARI
KHASKA No 53

REFERENCES

PLOT AREA	2830.40 SQ. YDS
OPEN LAND AREA	96.00 "
ROAD AREA	835.00 "
TOTAL LAND AREA	3761.40 SQ. YDS

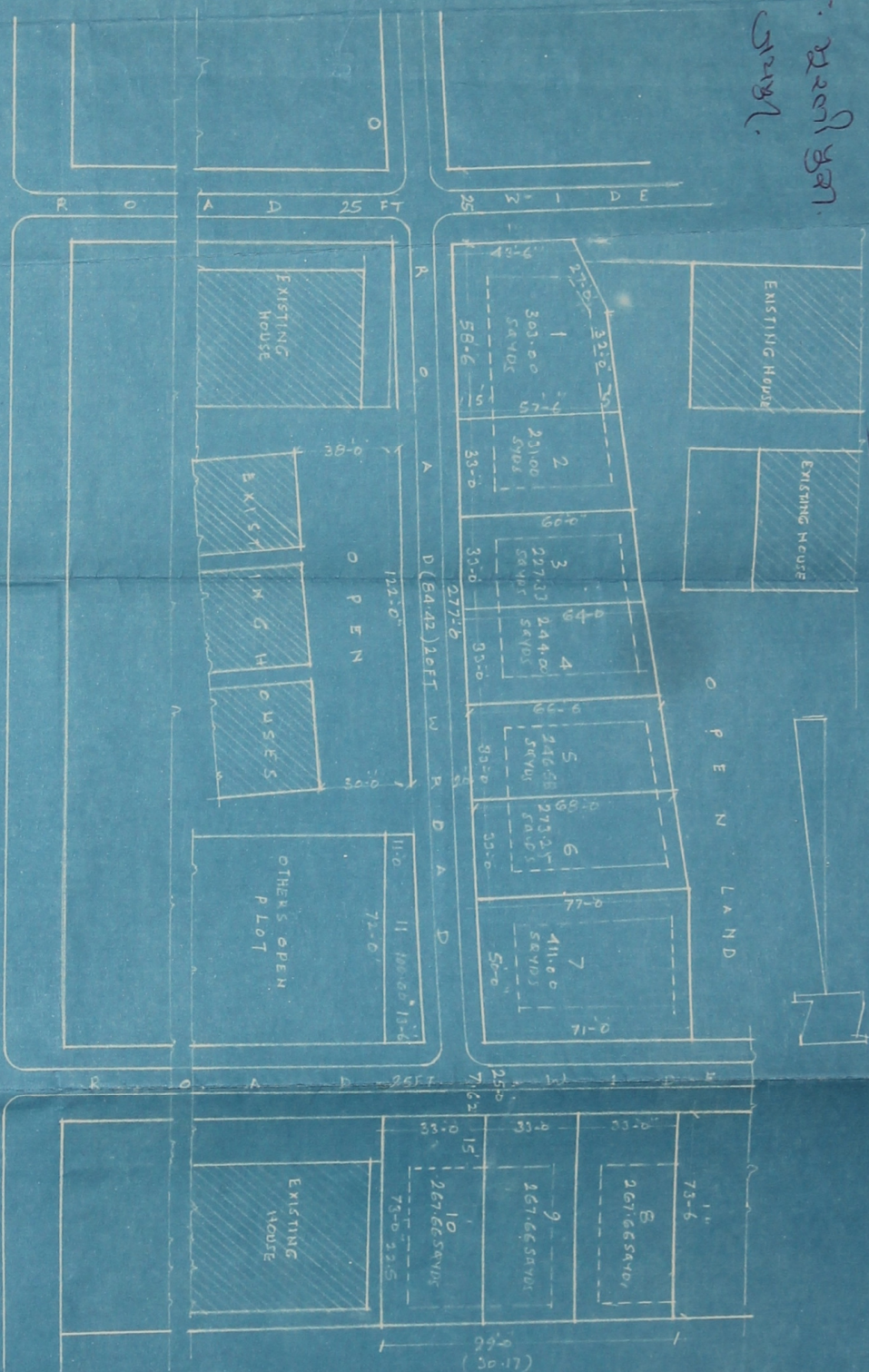
EXISTING PLOTS IN MUTUAL HOUSING CO-OPERATIVE SOCIETY LTD SCHEME No 5 A
DHER KA BALAJI CHOWD ROAD (NATIONAL HIGHWAY No 11) JAIPUR (RAJASTHAN) (SCALE: 50 FT TO ANCH)

श्रीपुष्प
सुखराम - को-ऑपरेटिव - (राजस्थान)
सोसायटी (विकास)

131 455

1. 2000 sq. ft. 2000/1000 = 2000/1000
 2. 2000 sq. ft. 2000/1000 = 2000/1000
 3. 2000 sq. ft. 2000/1000 = 2000/1000
 4. 2000 sq. ft. 2000/1000 = 2000/1000
 5. 2000 sq. ft. 2000/1000 = 2000/1000
 6. 2000 sq. ft. 2000/1000 = 2000/1000
 7. 2000 sq. ft. 2000/1000 = 2000/1000
 8. 2000 sq. ft. 2000/1000 = 2000/1000
 9. 2000 sq. ft. 2000/1000 = 2000/1000
 10. 2000 sq. ft. 2000/1000 = 2000/1000

1. 2000 sq. ft.
 2. 2000 sq. ft.
 3. 2000 sq. ft.



TO JAIPUR JAIPUR TO BIKANER (NATIONAL HIGHWAY NO. 11) ROAD TO CHOMU
 SOCIETY LAND SHOW THUS.

PROPOSED PLOTS IN MUTUAL HOUSING CO-OPERATIVE SOCIETY LTD. SCHEME NO. 5.A.
 DHER KA BALAJI CHOMU ROAD (NATIONAL HIGHWAY NO. 11) JAIPUR RAJASTHAN

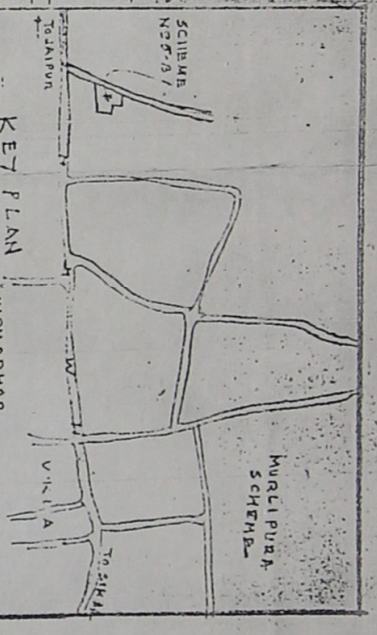
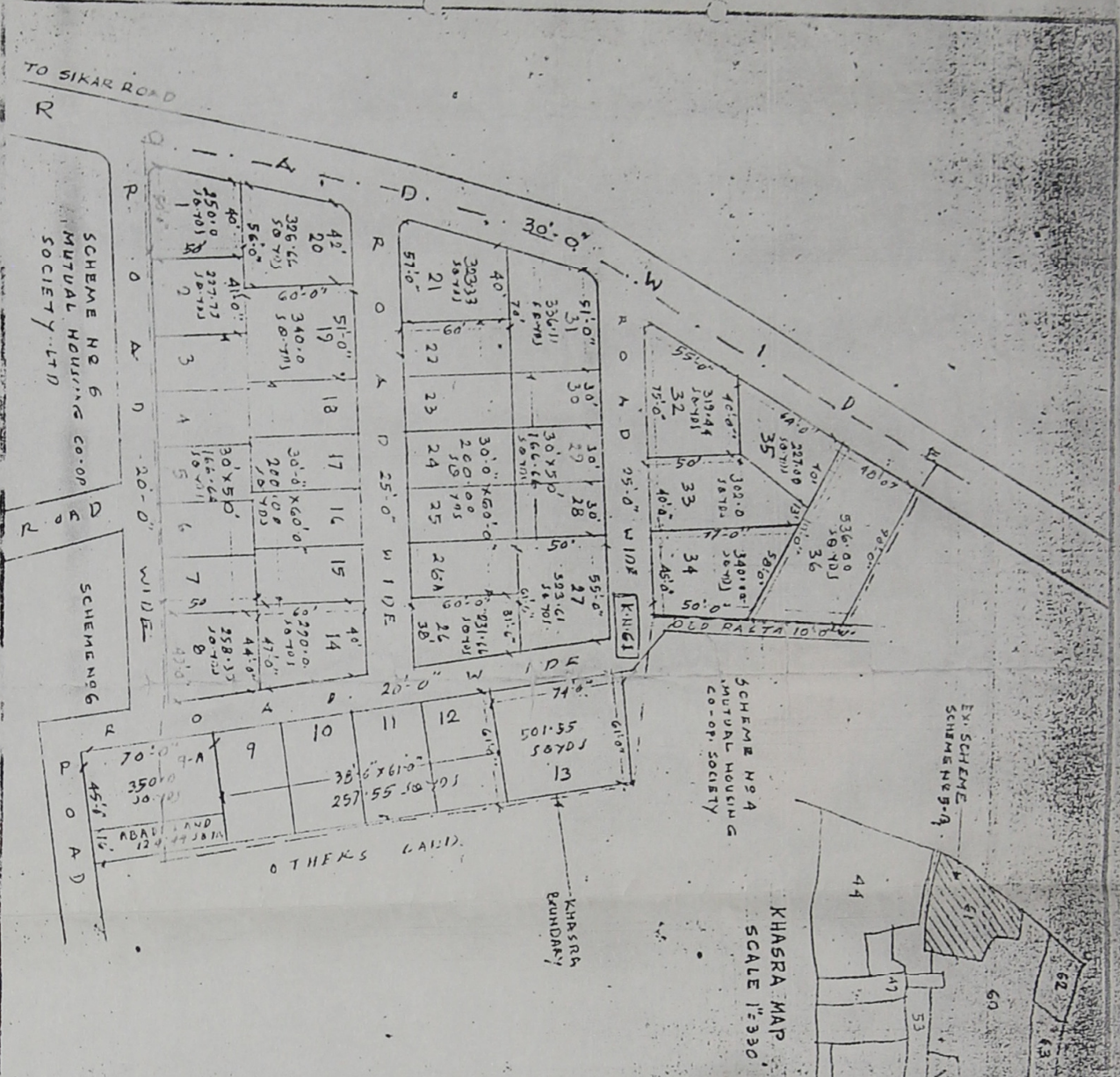
SCALE 40FT = 1 INCH

REITERANCES	Plot Area	Open Land Area	Road Area	Total Land Area
1	2830.40	96.00	835.00	3761.40
2	2366.48	180.35	698.13	3245.06
3	2366.48	180.35	698.13	3245.06
4	2366.48	180.35	698.13	3245.06
5	2366.48	180.35	698.13	3245.06
6	2366.48	180.35	698.13	3245.06
7	2366.48	180.35	698.13	3245.06
8	2366.48	180.35	698.13	3245.06
9	2366.48	180.35	698.13	3245.06
10	2366.48	180.35	698.13	3245.06
11	2366.48	180.35	698.13	3245.06
12	2366.48	180.35	698.13	3245.06
13	2366.48	180.35	698.13	3245.06
14	2366.48	180.35	698.13	3245.06
15	2366.48	180.35	698.13	3245.06
16	2366.48	180.35	698.13	3245.06
17	2366.48	180.35	698.13	3245.06
18	2366.48	180.35	698.13	3245.06
19	2366.48	180.35	698.13	3245.06
20	2366.48	180.35	698.13	3245.06
21	2366.48	180.35	698.13	3245.06
22	2366.48	180.35	698.13	3245.06
23	2366.48	180.35	698.13	3245.06
24	2366.48	180.35	698.13	3245.06
25	2366.48	180.35	698.13	3245.06
26	2366.48	180.35	698.13	3245.06
27	2366.48	180.35	698.13	3245.06
28	2366.48	180.35	698.13	3245.06
29	2366.48	180.35	698.13	3245.06
30	2366.48	180.35	698.13	3245.06
31	2366.48	180.35	698.13	3245.06
32	2366.48	180.35	698.13	3245.06
33	2366.48	180.35	698.13	3245.06
34	2366.48	180.35	698.13	3245.06
35	2366.48	180.35	698.13	3245.06
36	2366.48	180.35	698.13	3245.06
37	2366.48	180.35	698.13	3245.06
38	2366.48	180.35	698.13	3245.06
39	2366.48	180.35	698.13	3245.06
40	2366.48	180.35	698.13	3245.06
41	2366.48	180.35	698.13	3245.06
42	2366.48	180.35	698.13	3245.06
43	2366.48	180.35	698.13	3245.06
44	2366.48	180.35	698.13	3245.06
45	2366.48	180.35	698.13	3245.06
46	2366.48	180.35	698.13	3245.06
47	2366.48	180.35	698.13	3245.06
48	2366.48	180.35	698.13	3245.06
49	2366.48	180.35	698.13	3245.06
50	2366.48	180.35	698.13	3245.06

SECRETARY
 MUTUAL HOUSING CO-OPERATIVE SOCIETY LTD.

130
 (Signature)
 (Signature)

184



LAND USE:-

Plot Area	9587.00 sq. yds	78.34 %
Road Area	2650.00	21.66 %
Total Land Area	12237.00	100.00 %

NOTE:- THIS COPY IS PRODUCE AS PER CONVERSION
 RULE DT. 12-2-94 REQUIRED BY J.D.A.

LAY OUT PLAN OF SCHEME NO 5-B
 ON CHOMU ROAD, DIER KA BALAJI
 UNDER MUTUAL HOUSING CO-OPERATIVE
 SOCIETY LTD. JAIPUR (REGD)
 SCALE 1"=50' (KHASRANEGI)

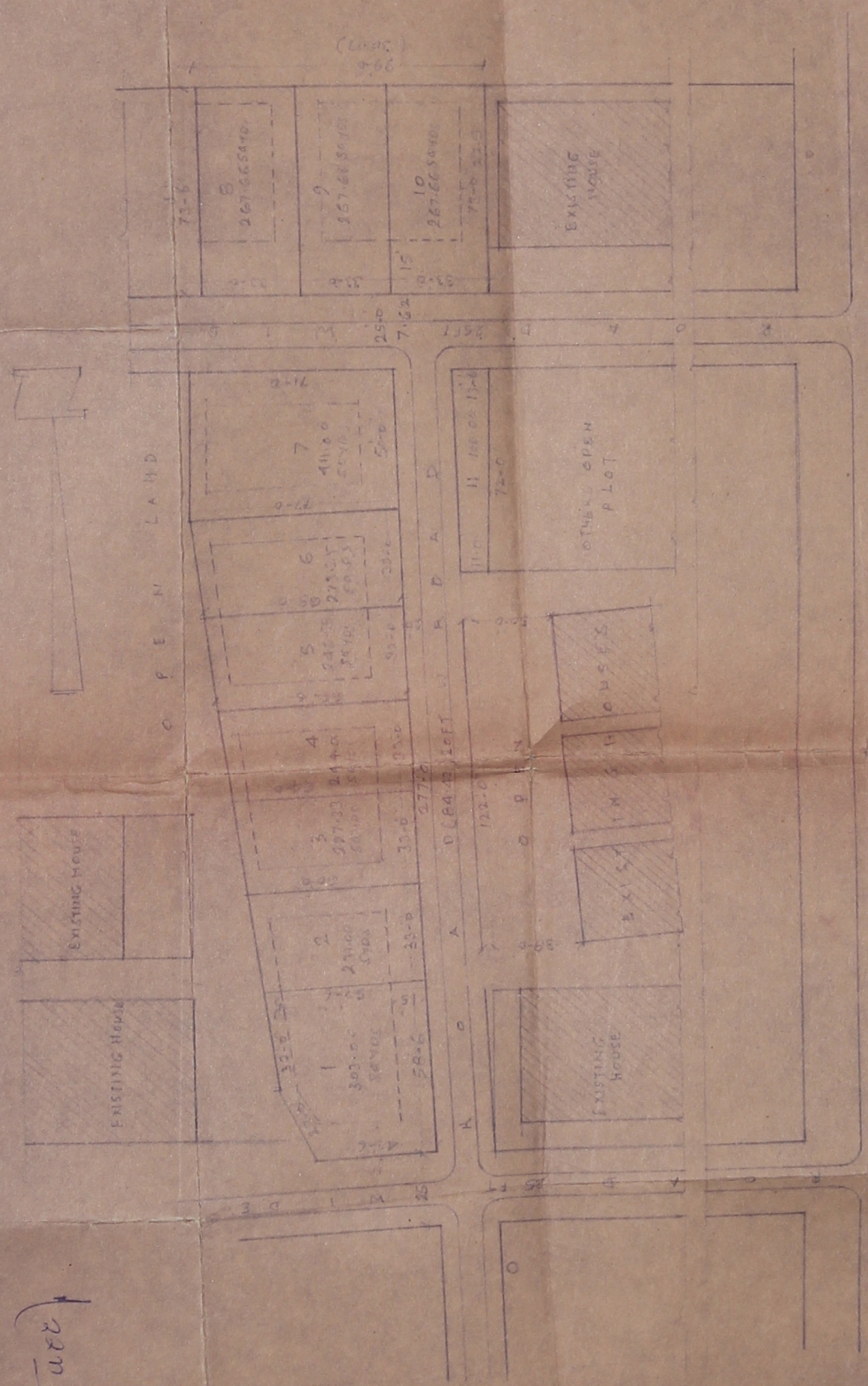
VILLAGE - BIR SARKAR

MUTUAL HOUSING CO-OPERATIVE SOCIETY

SCALE 1"=50' (KHASRANEGI)

Handwritten notes and stamps in the top left corner, including a circular stamp and some illegible text.

See in sheet 488



TO JAIPUR TO BIKANER (NATIONAL HIGHWAY NO 11) TO CHOMU

REFERENCES:-
 1 PLOT AREA
 2 OPEN LAND AREA
 3 ROAD AREA
 TOTAL LAND AREA

SAM
 2830.40 SQ.MTS OF 2366.48
 96.00 " OF 8025
 835.00 " OF 65810
 3761.40 SQ.MTS OF 319428

PROPOSED PLOTS IN MUTUAL HOUSING CO-OPERATIVE SOCIETY LTD. SCHEME NO 5 A,
 BALAJI CHOMU ROAD (NATIONAL HIGHWAY NO 11) JAIPUR RAJASTHAN

SCALE 40FT = 1 INCH

MUNNAL VARMA
 RETD. BY ARCHITECT, P.W.D. (RAJ)
 CONSULTANT ARCHITECT
 B-304, JAINTA COLONY
 JAIPUR Lic. No. 49

SECRETARY
 MUTUAL HOUSING CO-OPERATIVE SOCIETY LTD.

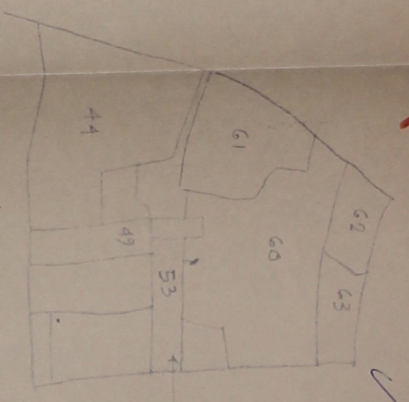
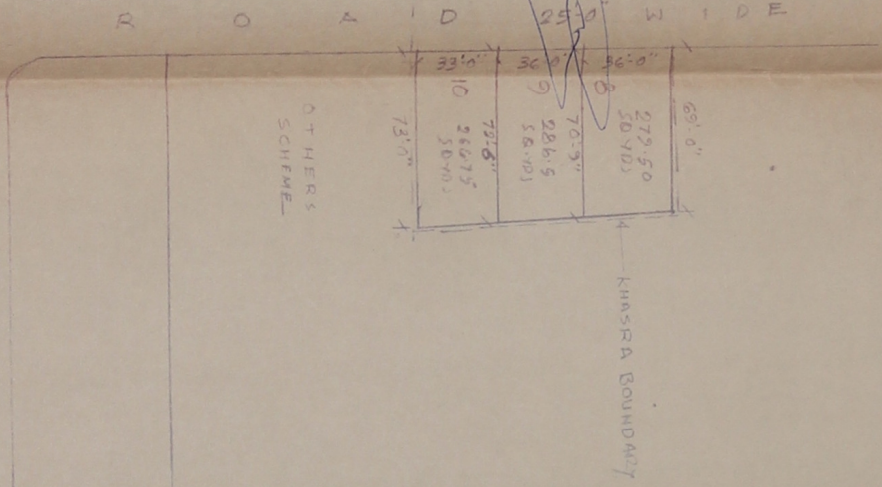
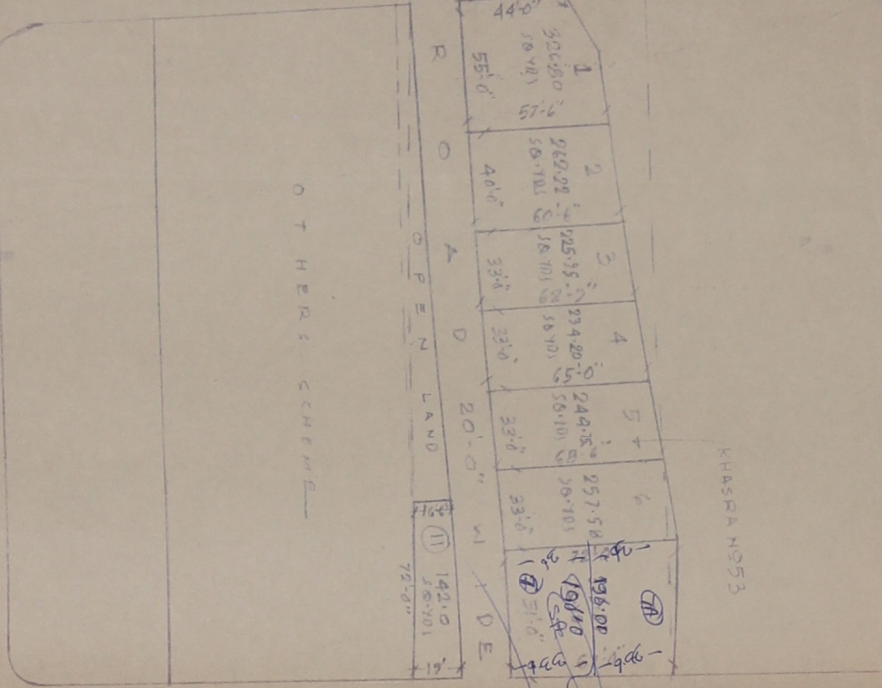
122
 35-
 (KS)

TO JAIPUR CITY

ROAD 25'-0" WIDE

SIKAR ROAD N.H.W. NO. 11

TO SIKAR



LAND USE

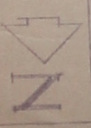
ROAD AREA :-	2920.00 SQ.YDS.	74.55%
OPEN AREA :-	817.00 SQ.YDS.	20.86%
TOTAL LAND AREA :-	3917.00 SQ.YDS.	100.00%

NOTE :- THIS COPY IS PRODUCE AS PER CONVERSION RULE DT. 18-2-94 REQUIRED BY JDA.

LAY OUT PLAN OF SCHEME NO. 5-A ON SIKAR ROAD DHER KA BALAJI UNDER MUTUAL HOUSING CO-OPERATIVE SOCIETY LTD. JAIPUR.

SCALE 1 inch = 50'

KHASRA NO. 53
VILLAGE - BIR SARKAR
SOCIETY REG.

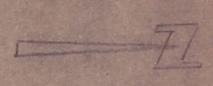


SECRETARY
MUTUAL HOUSING CO-OP.
SOCIETY LTD. JAIPUR.

30' ✓

PUNJAB GOVT
 SURVEY AND REVENUE DEPT
 LAND RECORDS
 PATNA COLONY
 DISTRICT PATNA
 STATE BIHAR
 1950

(28.04)
 92.0
 212.0
 (67.64)

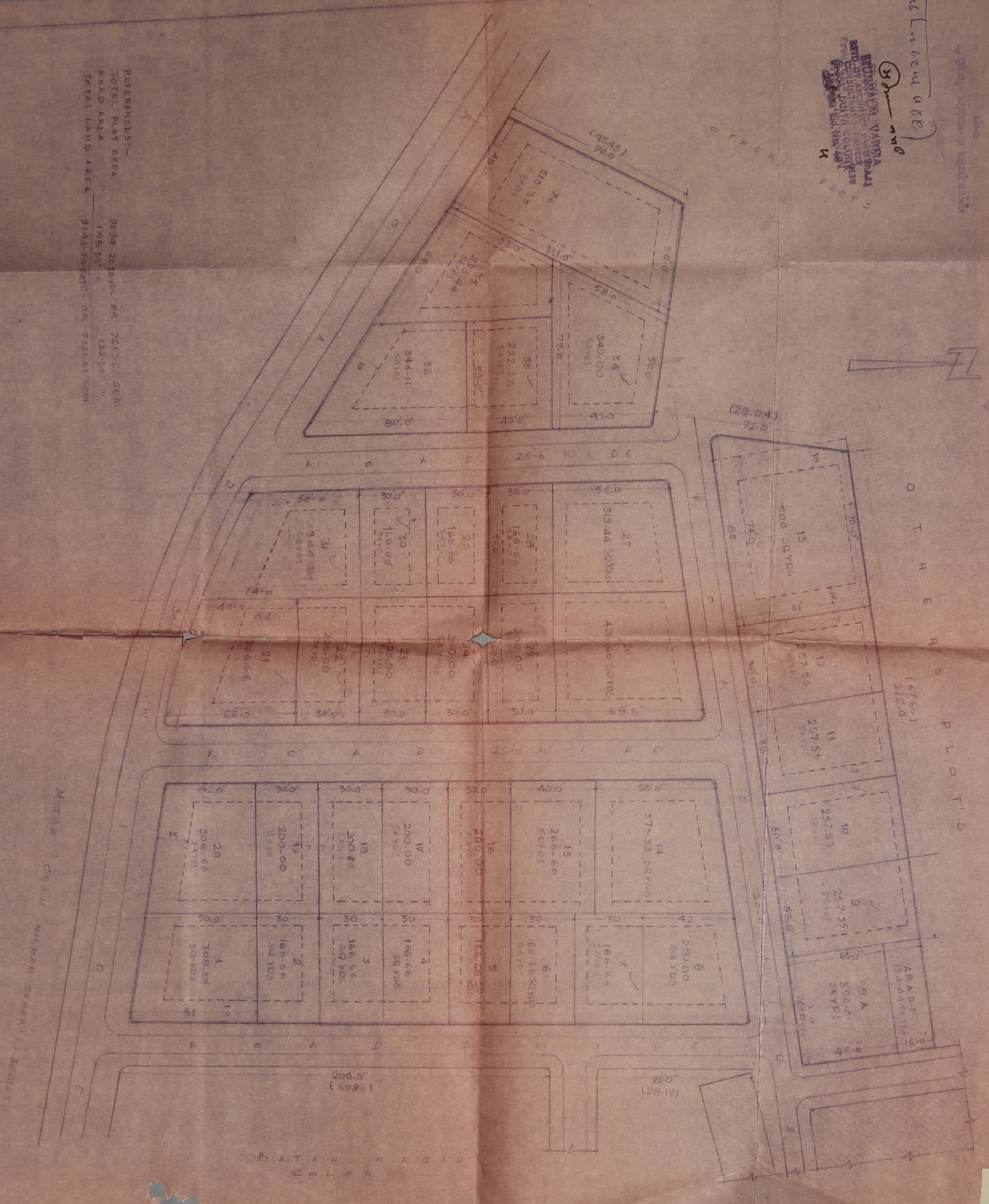


REFERENCES:-
 TOTAL PLOT AREA 9904.26 SQ YDS OR 722.37 ACRES
 ROAD AREA 148.97 " " 12.35 " "
 TOTAL LAND AREA 9755.29 SQ YDS OR 710.02 ACRES

PROPOSED PLOTS IN MUTUAL HOUSING COOPERATIVE SOCIETY LTD. SCHEME NO 5/B
 ON CHOKH ROAD DHEH KE BALAJI QUARTER

SCALE: 1:1000

SECRETARY



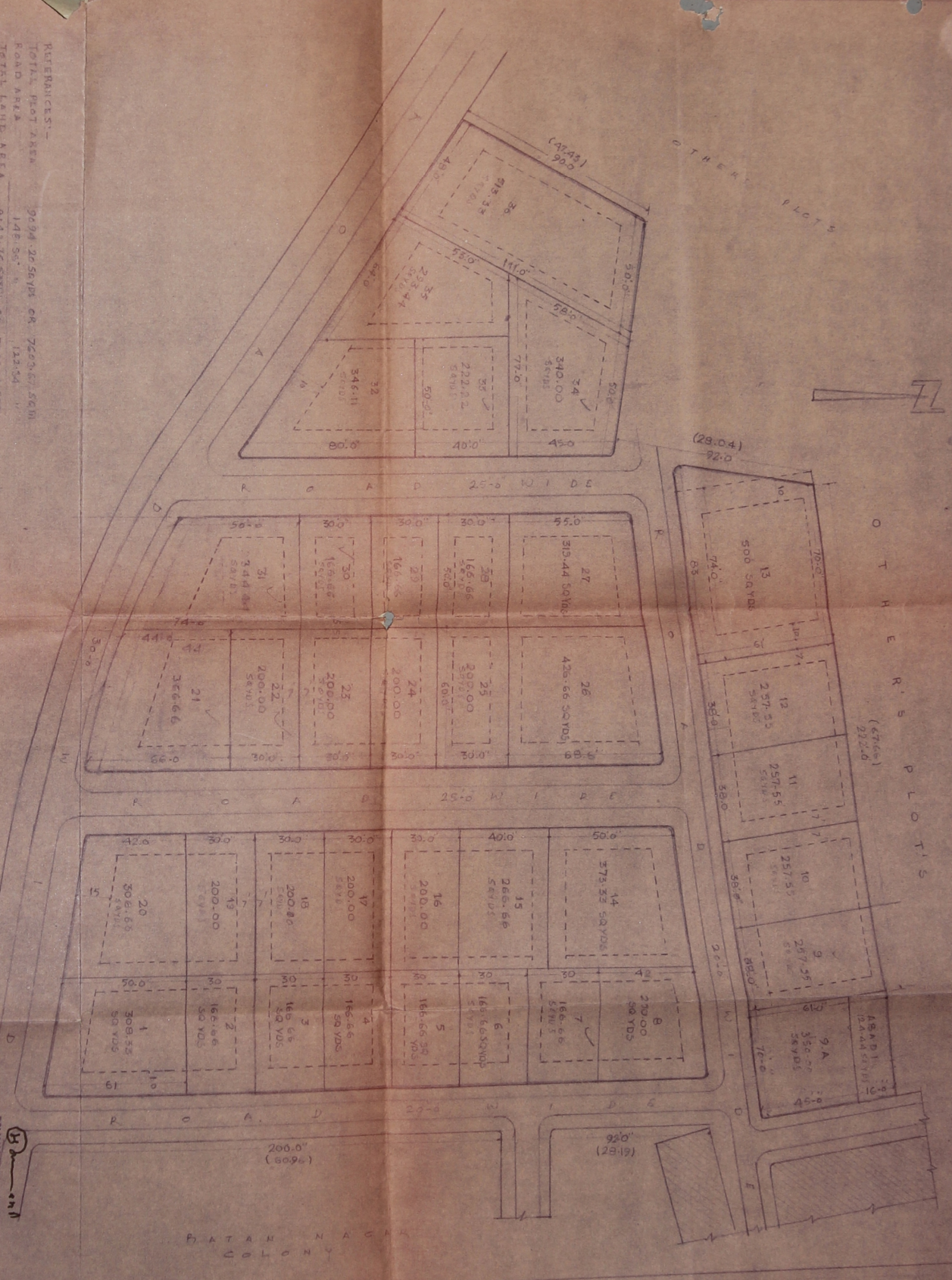
RULES AND REGULATIONS:-
 TOTAL PLOT AREA 9894.20 SQ YDS OR 7203.61 SQ M
 ROAD AREA 148.50 " 123.34 "
 TOTAL LAND AREA 9745.70 SQ YDS OR 7720.27 SQ M

PROPOSED PLOTS IN MUTUAL HOUSING CO-OPERATIVE SOCIETY LTD. SCHEME NO. 5 B
 ON CHORU ROAD DHEK KE BAZAR JALINDAR

SCALE - 1/8" = 1' 0"

MUTUAL HOUSING CO-OPERATIVE SOCIETY LTD.

SECRETARY
 8-301 JAIN'S CHOWK
 JALINDAR PIN No. 48



17

61

REPUBLICAN ENGINEERS
P.L. NO. 100/1962
REGISTERED CIVIL ENGINEERS
REGISTERED ARCHITECTS
REGISTERED SURVEYORS
REGISTERED ELECTRICAL ENGINEERS
REGISTERED MECHANICAL ENGINEERS
REGISTERED CHEMICAL ENGINEERS
REGISTERED METALLURGICAL ENGINEERS
REGISTERED AERONAUTICAL ENGINEERS
REGISTERED AGRICULTURAL ENGINEERS
REGISTERED MARINE ENGINEERS
REGISTERED INDUSTRIAL ENGINEERS
REGISTERED CIVIL ENGINEERS
REGISTERED ELECTRICAL ENGINEERS
REGISTERED MECHANICAL ENGINEERS
REGISTERED CHEMICAL ENGINEERS
REGISTERED METALLURGICAL ENGINEERS
REGISTERED AERONAUTICAL ENGINEERS
REGISTERED AGRICULTURAL ENGINEERS
REGISTERED MARINE ENGINEERS
REGISTERED INDUSTRIAL ENGINEERS

1961



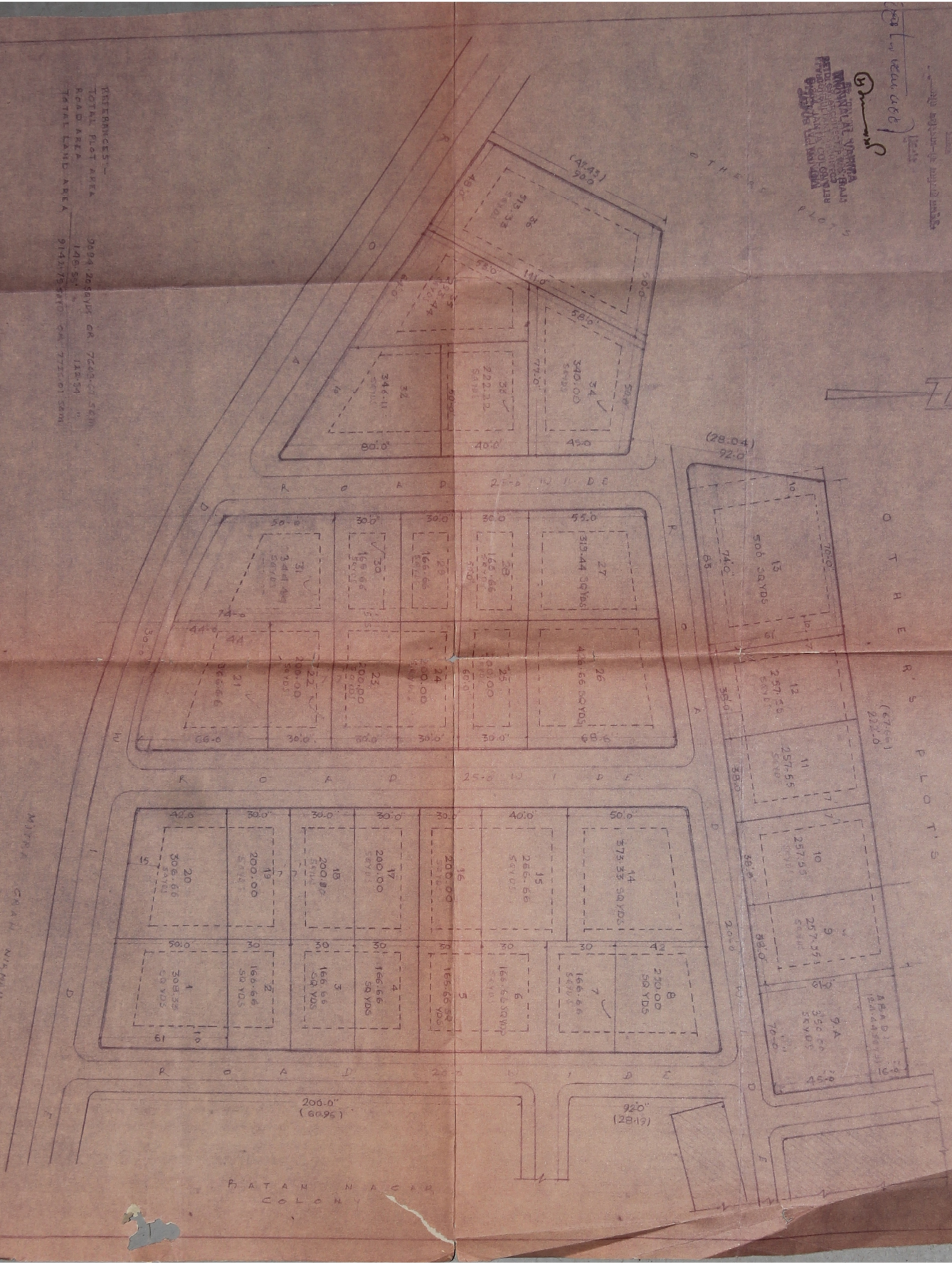
PROPOSED PLOTS IN MUTUAL HOUSING CO-OPERATIVE SOCIETY LTD. SCHEME NO. 5 B.
ON CHONG ROAD DHEM KE BALA JI JALDI.

REFERENCES:-
TOTAL PLOT AREA 2004.208 SQYDS OR 7543.41 SQM
ROAD AREA 148.57 " 538.94 "
TOTAL LAND AREA 2152.63810 SQM 7750.15 SQM

SCALE - 80 FT TO ANCH

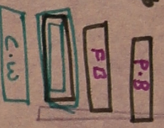
SECRETARY
MUTUAL HOUSING CO-OPERATIVE SOCIETY LTD.

MURTAZ CHAN N/A/M/N/SARAF/SECRETARY



BATAN NACHA
DOLON

PARTLEY Build-up
 FULLY Build-up
 OPEN
 C.W



REFERENCES:-
 TOTAL PLOT AREA 9224.20 SQ.M
 ROAD AREA 148.57 " " 1.62%
 TOTAL LAND AREA 9141.75 SQ.M OR 2718.01 SQ.M

PROPOSED PLOTS IN MUTUAL HOUSING COOPERATIVE SOCIETY LTD. SCHEME NO 5 B
 ON CHAND ROAD DEHRI BALAJI JAINPURA

SCALE - 1:1000

300 m x 100 m
 300 m x 100 m

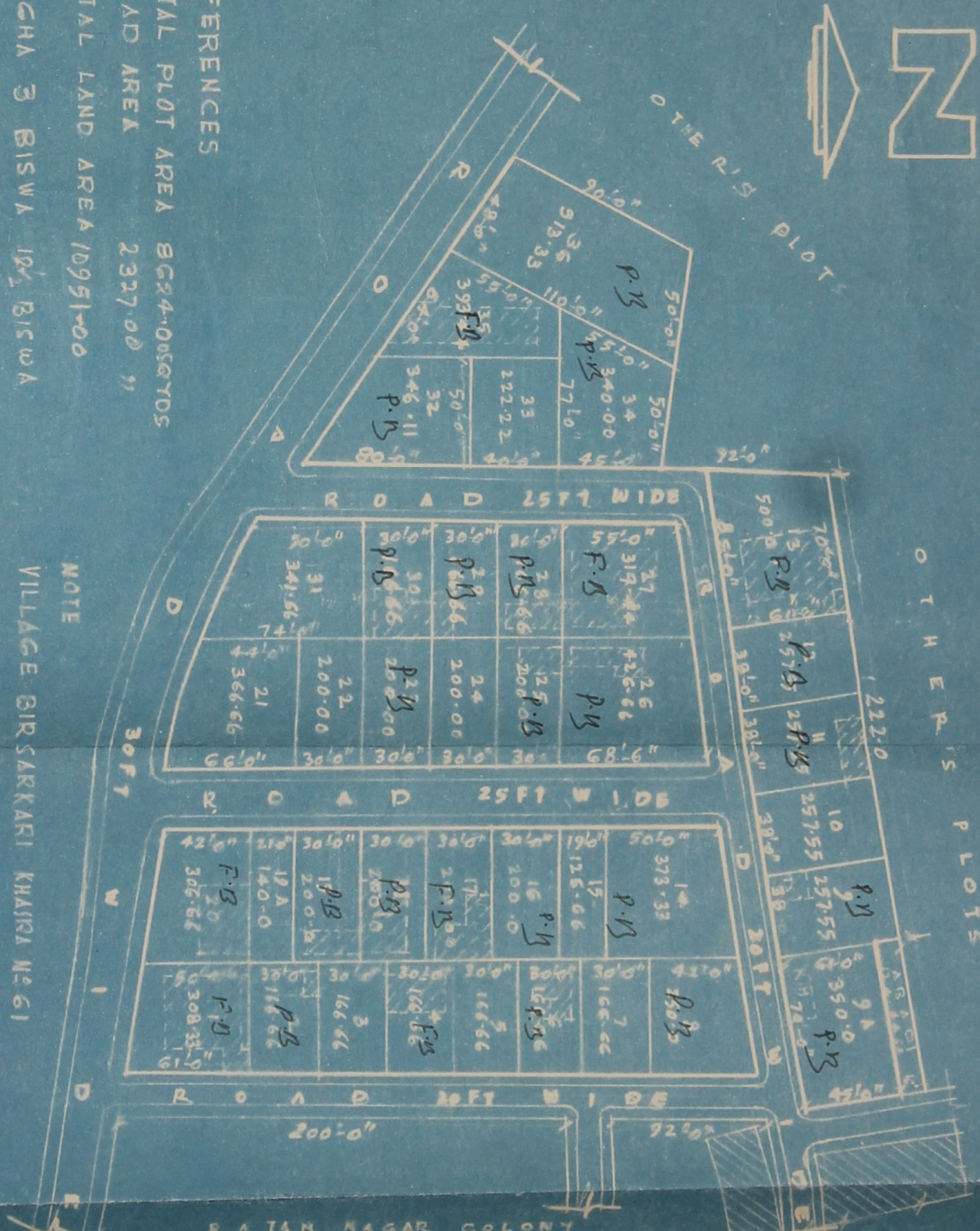
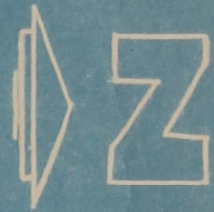
MUTUAL HOUSING COOPERATIVE SOCIETY LTD.
 BANGALORE
 JAPUR LIC. NO. 48



16

5

14



REFERENCES

TOTAL PLOT AREA 8624.00 SQ. YDS
 ROAD AREA 2327.00 "
 TOTAL LAND AREA 10951.00
 BIGHA 3 BISWA 19 1/2 BISWA

NOTE

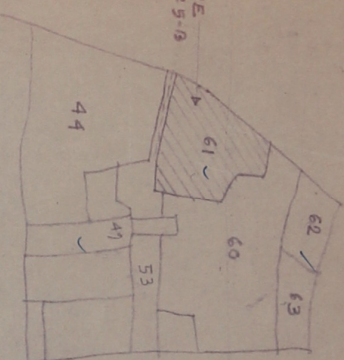
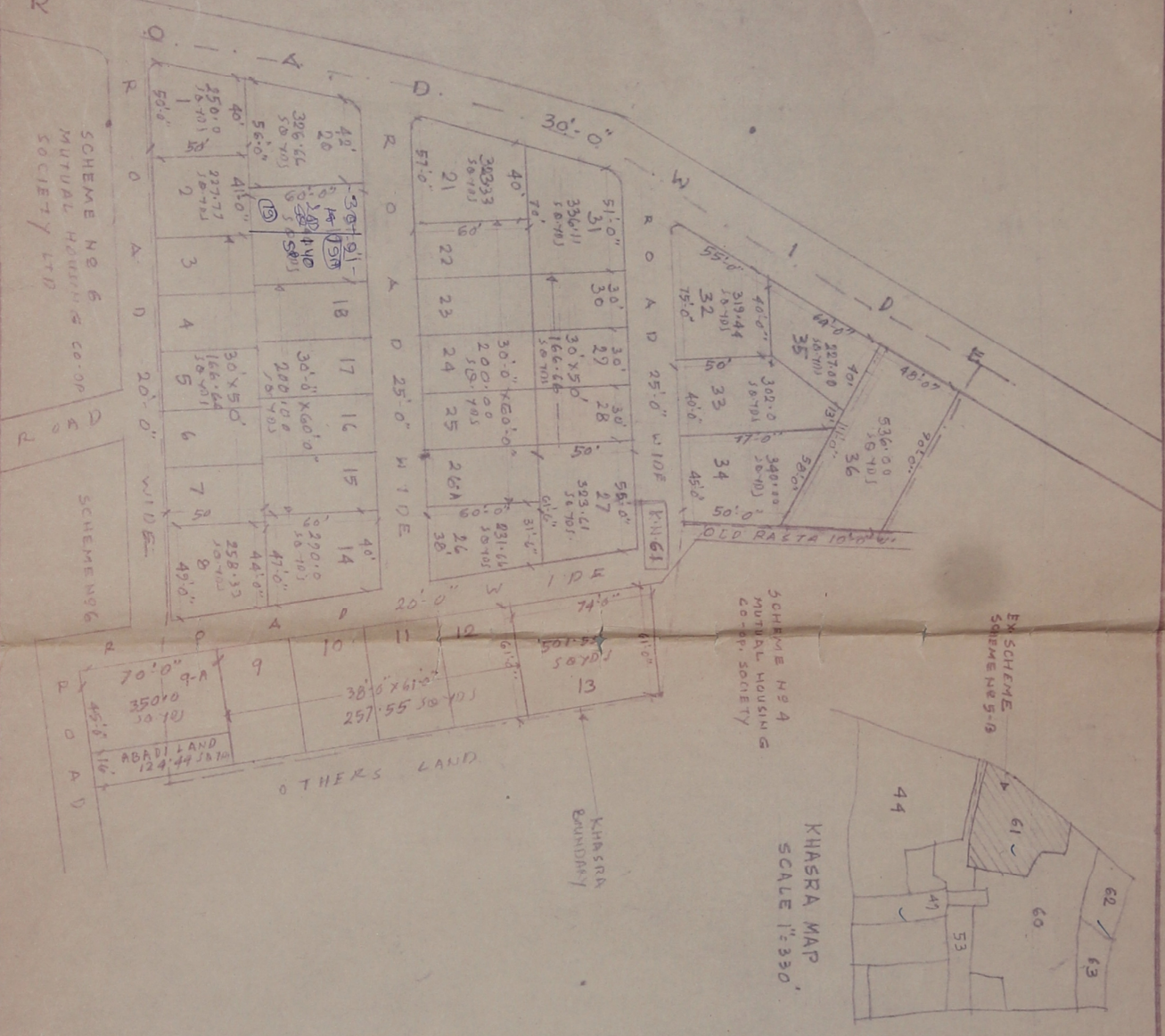
VILLAGE GIRSARKARI KHASRA No 61

EXISTING PLOTS IN MUTUAL HOUSING CO-OPERATIVE SOCIETY LTD
 SCHEME No 5B ON CHOMU ROAD DHER KA BALA JI JAIPUR SCALE 50 FT TO ANCHU

SECRETARY
 MUTUAL HOUSING CO-OPERATIVE SOCIETY
 LTD JAIPUR

Corrected
 गिरसार्करी
 खसरा नम्बर : 61
 का. (खसरा)

TO SIKAR ROAD



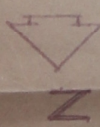
LAND USE:-

ROAD AREA	95.87.00 Sq. Yds	76.34 %
TOTAL LAND AREA	12,237.00	100.00 %

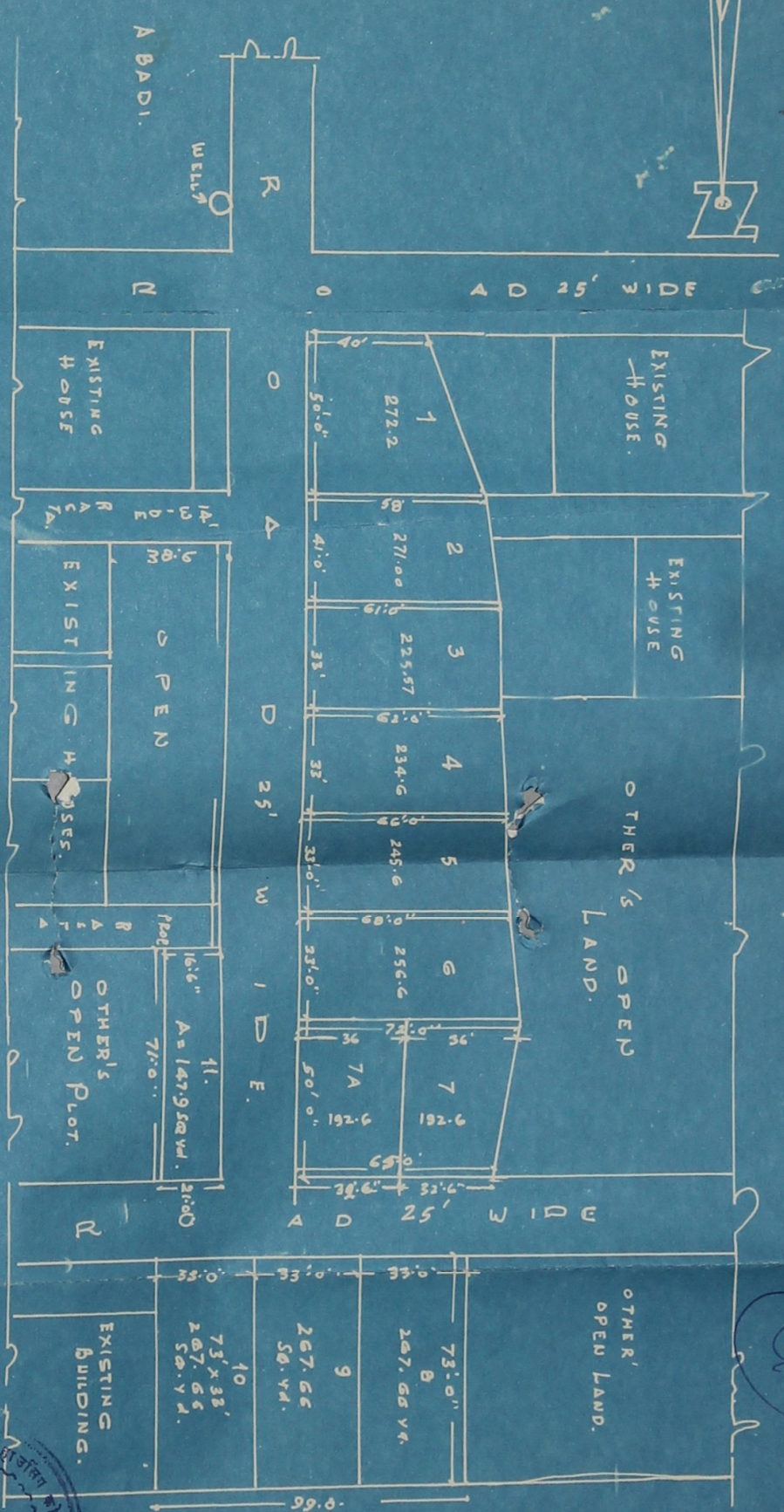
NOTE:- THIS COPY IS PRODUCE AS PER CONVERSION RULE DT. 18-2-94 REQUIRED BY J.O.A.

LAY OUT PLAN OF SCHEME NO 5-B ON CHOMU ROAD, DHERKA BALAJI UNDER MUTUAL HOUSING CO-OPERATIVE SOCIETY LTD. JAIPUR (REGD. NO. 124443674)

VILLAGE - BIR SAKHARI
 SECRETARY
 MUTUAL HOUSING CO-OPERATIVE SOCIETY LTD JAIPUR



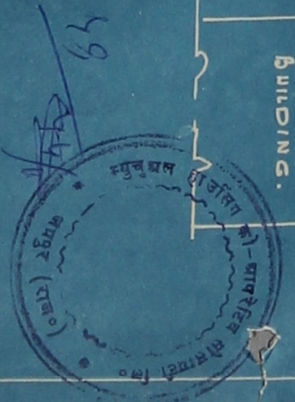
12



RATAN-NAGAR

LAYOUT PLAN OF PLOTS, AT BEED SARKHARI JAIPUR-BIKANER ROAD N.H.W. 11
 BY MUTUAL HOUSING COOPERATIVE SOCIETY, JAIPUR SCHEME NO 5A.

SCALE 1" = 40 FT.



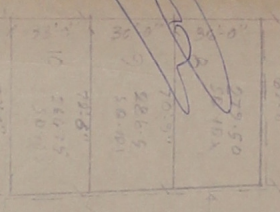
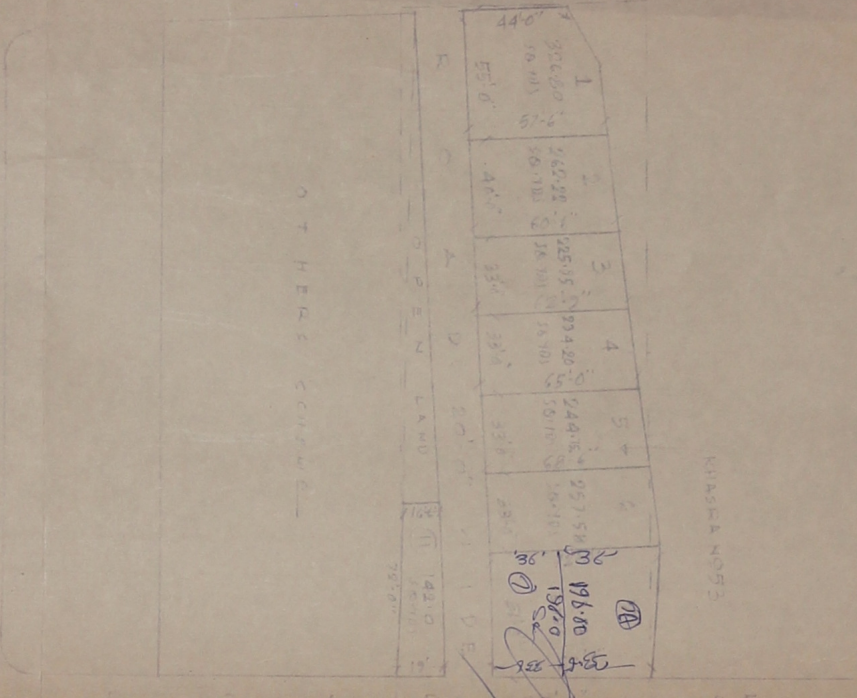
MUTUAL HOUSING COOPERATIVE SOCIETY JAIPUR

TO JAMPUR CITY

SIKAR ROAD RUNNING IN

TO SIKAR

ROAD 25' 0" WIDE



KHASKA NO. 53

KHASKA BOUNDARY



KHASKA MAP

SCALE: 1"=500'

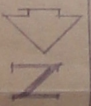
LAND USE

PLANT AREA	2920.00	50.00%	74.55%
ROAD AREA	817.00	15.71%	20.86%
OPEN AREA	1401.00	26.40%	4.59%
TOTAL LAND AREA	5917.00	50.00%	100.00%

NOTE: THIS COPY IS PRODUCE AS PER CONVERSION RULE DT. 18.2.94 REQUIRED BY JDA.

LAY OUT PLAN OF SCHEME
 NO. 5-A ON SIKAR ROAD CHUR
 KA BALAJI UNDER MUTUAL
 HOUSING CO-OPERATIVE
 SOCIETY LTD. JAMPUR.

SCALE: 1"=50'
 KHASKA NO. 53
 VILLAGE - BIR SARIKA
 SOCIETY REG. NO. 113



SECRETARY
 MUTUAL HOUSING CO-OP.
 SOCIETY LTD. JAMPUR.