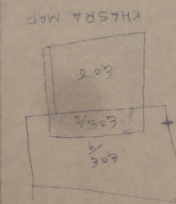
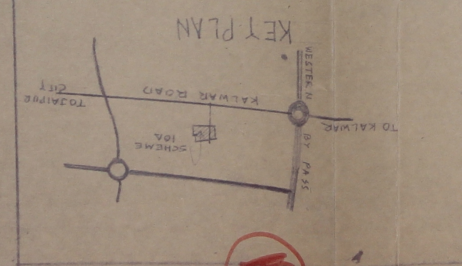


VILLAGE JHOTWARA
 KHASRA NO 609, 607, 608
 SOCIETY REG. NO. 2467

REVISIED LAY OUT PLAN OF
 SCHEME NO TO A MUTUAL
 HOUSING CO-OP. SOCIETY LTD
 KALWAR ROAD JHOTWARA JHUPUR

SCALE: 1:50
 SCHEME BOUNDARY SHOWN THUS
 RECURPED BY S.D.A
 CONVERSION RULE DT 19-2-74
 NOTE:- THIS COPY IS PRODUCE AS PER.

LANDUSE ANALYSIS:
 AREA IN SQ. YDS
 RESIDENTIAL - 1098.49 (36%)
 ROAD - 462.95 (15%)
 OPEN AREA - 249.12 (8%)
 TOTAL AREA - 1526.00 (100%)



O T H E R S ' S C H E M E

30	27.6	25.6	15	14	13	12	11	10
206.53	241.20	206.53	190.71	173.41	190.71	206.53	206.53	206.53
18.70	18.70	18.70	18.70	18.70	18.70	18.70	18.70	18.70
18.70	18.70	18.70	18.70	18.70	18.70	18.70	18.70	18.70
26	26	26	26	26	26	26	26	26
27	27	27	27	27	27	27	27	27

30	30	30	30	30	30	30	30	30
140.5	140.5	140.5	140.5	140.5	140.5	140.5	140.5	140.5
18.70	18.70	18.70	18.70	18.70	18.70	18.70	18.70	18.70
18.70	18.70	18.70	18.70	18.70	18.70	18.70	18.70	18.70
26	26	26	26	26	26	26	26	26
27	27	27	27	27	27	27	27	27

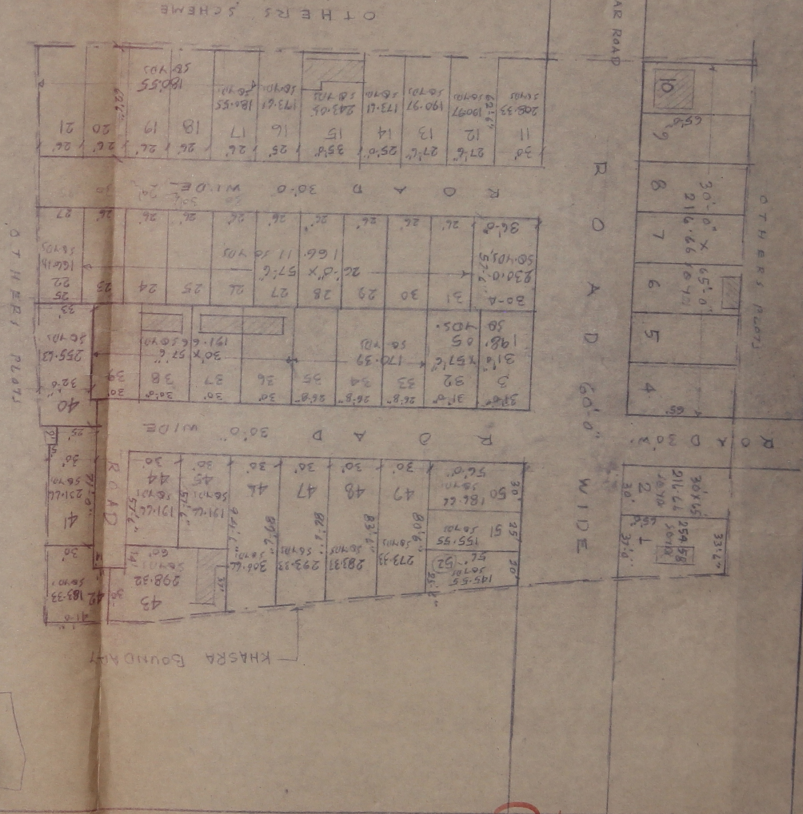
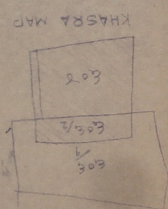
33

33

SOCIETY REG. NO. L-2467
 KHASRA NO. 604, 607, 608
 VILLAGE JHOTWARA
 PLOT NO. 10
 REVISIONS
 5
 4
 3
 2
 1
 1977
 THE MUTUAL ROAD CO-OP. SOCIETY LTD.
 KALWAR ROAD JHOTWARA

REVISED LAYOUT PLAN OF
 SCHEME NO. TO A MUTUAL
 HOUSING CO-OP. SOCIETY LTD.
 KALWAR ROAD JHOTWARA JAJPUR

SCALE: 1:50
 SCHEME BOUNDARY SHOWN THUS
 NOTE: THIS COPY IS PRODUCE AS PER
 CONVERSION RULE DT-18-2-74
 REQUIRED BY J.D.A.
 LAND USE ANALYSIS:
 AREA IN SQ. MTS. PERCENTAGE
 RESIDENTIAL - 10328.49 56.70% 67.69%
 ROAD - 4682.95 25.70% 30.28%
 OPEN AREA - 249.16 1.50% 1.63%
 TOTAL AREA - 15260.60 SQ. MTS. 100.00%



19
 1977

SECRETARY
 INDIA L. ROAD
 VILLAGE JHOTWARA

SOCIETY REG. NO. L-2467
 KHASRA NO. 604, 605, 606

REVISED LAY OUT PLAN OF
 SCHEME NO. 10-A MUTUAL
 HOUSING CO-OP SOCIETY LTD
 KALWAR ROAD JHOTWARA JALPUR

SCALE: 1"=50'

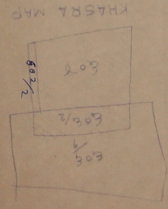
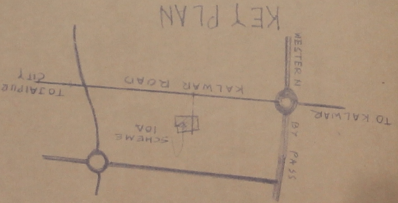
SCHEME BOUNDARY SHOWN THUS

REQUIRED BY J.D.A

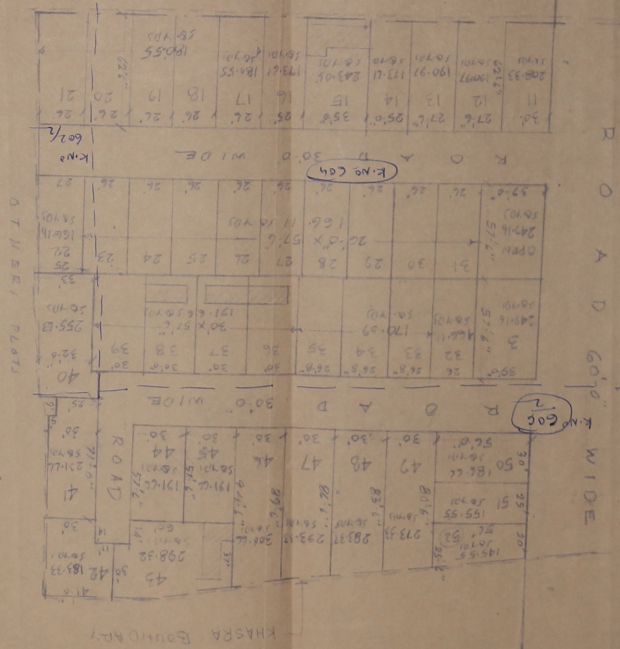
CONVERSION FILE DT. 18-2-74

NOTE:- THIS COPY IS PRODUCE AS PER

LAND USE ANALYSIS:
 AREA IN SQ. MTR. PERCENTAGE
 RESIDENTIAL - 10328.49 SQ.MTR. 37.69%
 ROAD - 4682.35 SQ.MTR. 30.68%
 OPEN AREA - 2497.16 SQ.MTR. 1.63%
 TOTAL AREA - 15260.00 SQ.MTR. 100.00%

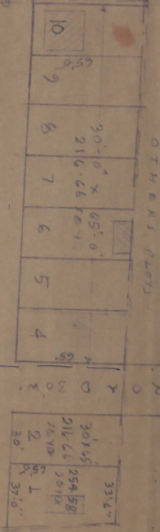


OTHERS SCHEME



TO KALWAR ROAD

ROAD 30'0" WIDE



OTHERS PLOTS

88

87

86