

12/10/53

SCALE 50 FT TO AN INCH.

LAY OUT PLAN OF SINDHU NAGAR CO-OPERATIVE HOUSING SOCIETY LTD. ON ROAD TO ANAND FACTORY ROAD JHOTWARA.

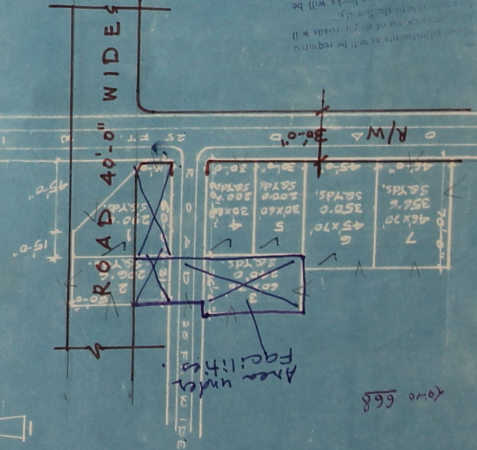
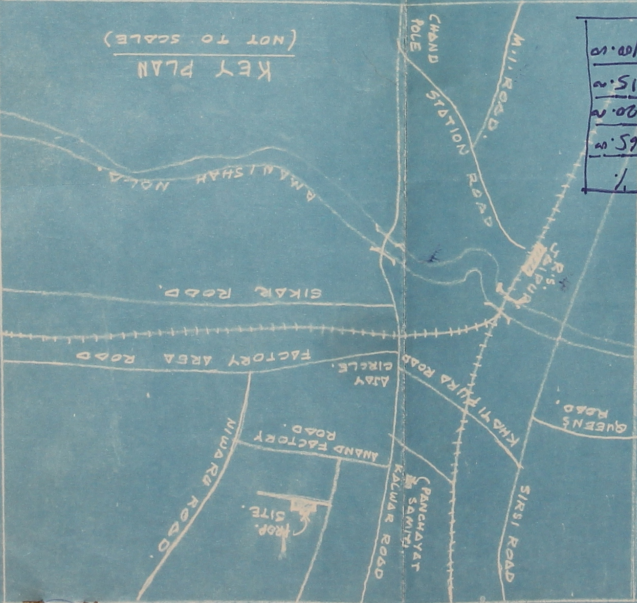
LAY OUT PLAN OF SCHEME NO. 6 OF SINDHU NAGAR CO-OPERATIVE HOUSING SOCIETY LTD.

1. AREA OF PLOTS = 1798.32 S.A.Yds.
 2. AREA OF ROADS = 217.15 S.A.Yds.
- TOTAL AREA = 2006.62 S.A.Yds.

Approved by the B.P.C XVII Meeting held on 11.10.53

Use	Area in Sq.Fts.	Ratio
Use	65.00	1/1
Area in Sq.Fts.	0.269	65.00
Roads	0.084	20.00
Facilities	0.061	15.00
Total	0.414	100.00

KHASRA PLAN (AS PER RECORD)



1. The area of the plots as shown in the plan is 1798.32 S.A.Yds. and the area of the roads is 217.15 S.A.Yds. The total area is 2006.62 S.A.Yds.

2. The area of the plots as shown in the plan is 1798.32 S.A.Yds. and the area of the roads is 217.15 S.A.Yds. The total area is 2006.62 S.A.Yds.